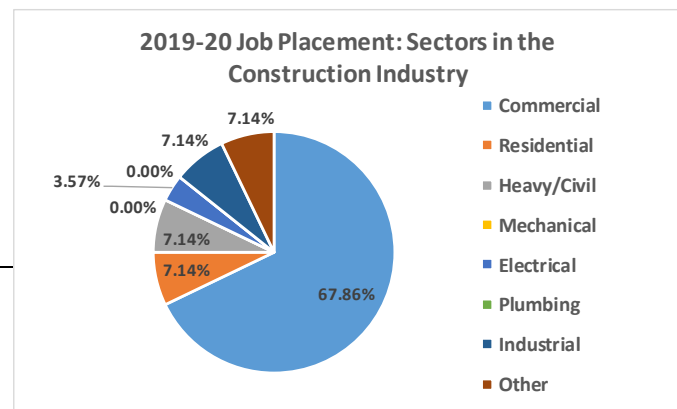


Placement Data for Fall 2019 & Spring 2020 Graduates

Employment data were collected at part of the annual senior exit survey. The columns for employers and position titles are listed alphabetically and are independent of each other. If more than one graduate was hired per employer or had a similar position title, than the total is noted in parentheses. Starting salary does not include total compensation package and is presented by salary range. Average salary computed from midpoint of range. Not all graduates provided all of the requested information.

	No.	%
Total number of CM graduates	38	100.0%
Accepted offer	25	65.8%
Tentative offer or considering multiple offers	3	7.9%
Interviewing	8	21.1%
Not started job search	2	5.3%

Employers	Position Titles	Starting Salary Range
Alston Construction	Project Engineer	Less than 10K= 1
Clark Construction	Engineer	30-40K = 0
Connelly Electric	Project Engineer	40-50K = 1
Denk and Roche	Project engineer	50-60K = 4
Elevated Construction Inc	Project Engineer	60-70K = 17
Elevated Construction Inc	Project Engineer	70-80K= 1
FCL Builderes	Field Engineer	Over 80K= 2
Hensel Phelps	Project Engineer	Total = 26
J.M. Holmes & Sons Quality Builders	Project Manager	
Kiewit	Engineer 1	Average = \$62,692
McCarthy Building Companies	VDC Field Services Engineer	
McCarthy Construction	Project Engineer	
Michuda Construction	Project Engineer	
Morton Buildings	Drafter/ Estimator	
Shales Mcnutt Construction	Assistant Project Manager	
The Haskell Company	Assistant Project Manager Level I	
The Walsh Group	Project Engineer	
The Whiting-Turner Contracting Company	Project Engineer	
The Whiting-Turner Contracting Company	Project Engineer	
The Whiting-Turner Contracting Company	Field Engineer	
Unlimited contracting	Project Engineer	
W.E. O'Neil Construction Company	Project Engineer	
Weis Builders	Project Engineer	



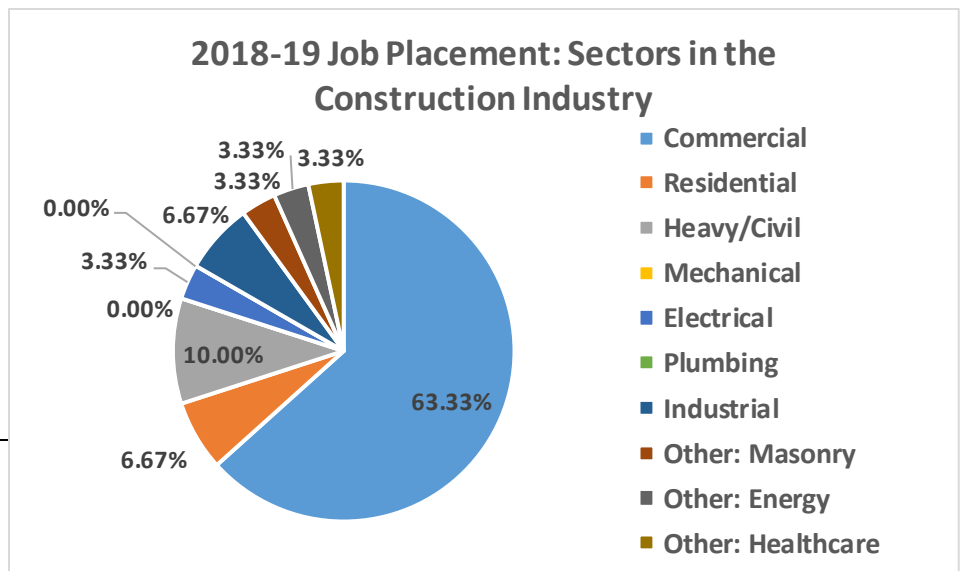
Placement Data for Fall 2018 & Spring 2019 Graduates

Employment data were collected at part of the annual senior exit survey. The columns for employers and position titles are listed alphabetically and are independent of each other. If more than one graduate was hired per employer or had a similar position title, than the total is noted in parentheses. Starting salary does not include total compensation package and is presented by salary range. Average salary computed from midpoint of range. Not all graduates provided all of the requested information.

	No.	%
Total number of CM graduates	37	100.0%
Accepted offer	27	73.0%
Tentative offer or considering multiple offers	4	10.8%
Interviewing	5	13.5%
Not started job search	1	2.7%

Employers	Position Titles	Starting Salary Range
Aldridge Electric	Assistant Project Engineer	
Bulley and Andrew	Assistant Project Manager	30-40K = 0
Charlie Knapp Builders	Assistant Superintendent	40-50K = 2
Clune Construction	Energy Engineer	50-60K = 9
Denk & Roche	Facilities Specialist	60-70K = 18
F.H. Paschen	Field Engineer	70-80K= 2
FCL Builders	Project Engineer	
FH Paschen	Project Manager	
Glass Solutions, Inc		
Holder Construcion		
International Contractors Inc		
Lo Destro Construction		
Mortenson		
Nicholas and Associates		
OSF Healthcare System / OSF Design Group		
Otto Baum Company		
Pepper Construction		
Performance Contracting Inc.		
R Carlson & Sons Inc		
RC Wegman		
River City Construction		
Rock Road Companies		
Weis Builders		
William Charles Construction		

Average = \$61,452



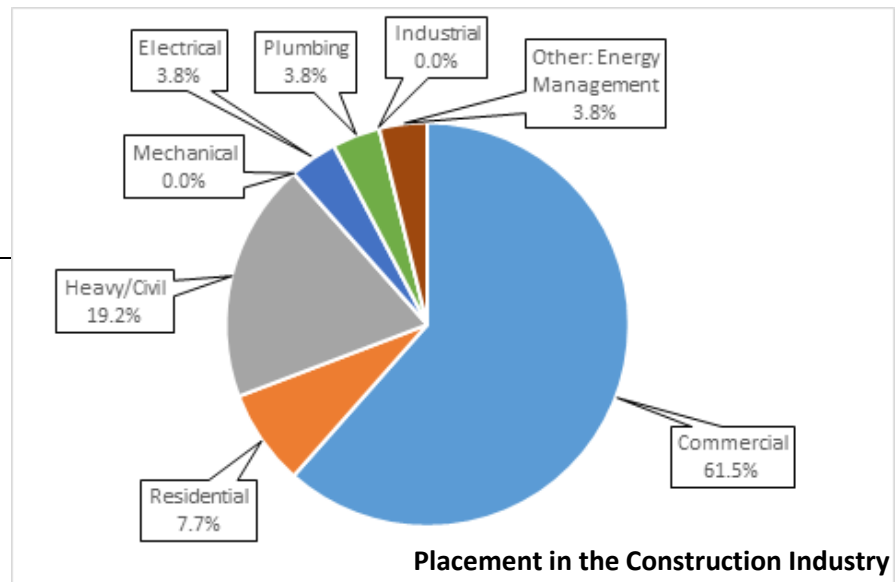
Placement Data for Fall 2017 & Spring 2018 Graduates

Employment data were collected at part of the annual senior exit survey. The columns for employers and position titles are listed alphabetically and are independent of each other. If more than one graduate was hired per employer or had a similar position title, than the total is noted in parentheses. Starting salary does not include total compensation package and is presented by salary range. Average salary computed from midpoint of range. Not all graduates provided all of the requested information.

	No.	%
Total number of CM graduates	30	100.0%
Accepted offer	23	76.7%
Tentative offer or considering multiple offers	4	13.3%
Interviewing	2	6.7%
Not started job search	1	3.3%

Employers	Position Titles	Starting Salary Range
Clune Construction Company	Assistant Project Engineer	
DR Horton	Assistant Project Manager	30-40K = 0
Executive Construction	Assistant Superintendent	40-50K = 2
F.H. Paschen	Energy Engineer	50-60K = 10
Helios Construction Services	Facilities Specialist	60-70K = 14
International Contractors	Field Engineer	70-80K= 0
Louis Belletini	Project Engineer	Total = 26
Maman Corp	Project Manager	
Meade Electric		
Pepper Construction		
River City Construction		
Roundys Supermarkets		
Stark Excavating		
State Farm		
Suffolk Construction		
The Hill Group		
Turner Construction		
Waikato Enterprises		
Whiting Turner		
Wight & Company		

Average = \$59,615



Placement Data for Fall 2016 & Spring 2017 Graduates

Employment data were collected at part of the annual senior exit survey. The columns for employers and position titles are listed alphabetically and are independent of each other. If more than one graduate was hired per employer or had a similar position title, than the total is noted in parentheses. Starting salary does not include total compensation package and is presented by salary range. Average salary computed from midpoint of range. Not all graduates provided all of the requested information.

	No.	%
Total number of CM graduates	31	100%
Accepted offer	18	58%
Tentative offer or considering multiple offers	2	6%
Interviewing	8	26%
Not started job search	3	10%

Employers	Position Titles	Starting Salary Range
Bear Construction Company	Assistant Project Engineer	
Builtech	Assistant Project Manager	30-40K = 1
Executive Construction Inc (ECI)	Assistant Superintendent	40-50K = 2
Holder Construction	Associate Project Engineer	50-60K = 14
Illinois Masonry Corp	Engineer	60-70K = 5
M/I Homes	Estimator	70-80K = 0
Mario Sinacola & Sons	Project Manager	Total = 22
Morgan/Harbour Construction	Field Coordinator	
Scott Lewis Homes	Field Manager	Average = \$55,455
The Hill Group	Office Engineer	
Turner Construction	Project Engineer	
Weis Builders, Inc.	Superintendent	
Whiting-Turner		